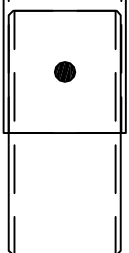


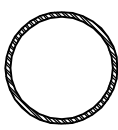
Ø3.0" OD x 0.12" wall x 36" Structural Tubing
GT Part# FP3T
(3" Standard Pier Tube)

36.0"

Ø3" Standard Duty Foundation Pier



3.0"



Ø2.75" OD x 0.12" wall x 29.75" Structural Tubing
GT Part# FP3TRI
(3" Tube Reinforcing Insert)

29.75"



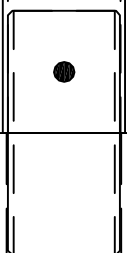
Ø2.75" OD x 0.134" x 6"
GT Part# FP6C
(3" Tube Coupler)

Ø3.25" OD x 0.22" x 3.125"
GT Part# FP3FC
(Friction Collar)



Ø3.0" OD x 0.12" wall x 36" Structural Tubing
GT Part# FP3SP
(3" Starter Tube)

36.0"



Ø3.5" OD x 0.188" wall x 42" Structural Tubing
GT Part# FP3TRO
(42" Outsert Tube - to be used with Heavy Duty Bracket FP3BAH series)

42.0"

Pier Tube - Starter Tube - Insert - Outsert

Pier Tube:

Ø3.0" OD x 0.12" wall x 36"
High Strength ERW Structural Steel Tubing
per ASTM A513, Type 1, Grade 70
Min Yield Stress: $F_y = 70$ ksi
Min Ult Tensile Stress: $F_u = 80$ ksi

Tube Coupler:

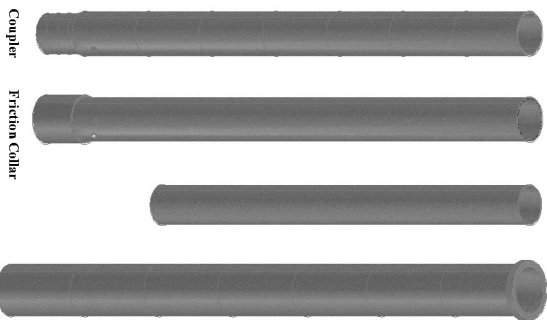
Ø2.75" OD x 0.134" wall x 6"
High Strength DOM Structural Steel Tubing
per ASTM A513, Type 5 Grade 1026
Min Yield Stress: $F_y = 65$ ksi
Min Ult Tensile Stress: $F_u = 75$ ksi

Friction Collar:

Ø3.25" OD x 0.22" wall x 3.125"
High Strength ERW Structural Steel Tubing
per ASTM A500, Grade 1020
Min Yield Stress: $F_y = 50$ ksi
Min Ult Tensile Stress: $F_u = 62$ ksi

Weld:

ER70 per AWS D1.1-2010
Min Ult Tensile Stress: $F_u = 70$ ksi



Reinforcing Insert

Ø2.75" OD x 0.12" wall x 29.75"
High Strength ERW Structural Steel Tubing
per ASTM A513, Type 1, Grade C1010
Min Yield Stress: $F_y = 32$ ksi
Min Ult Tensile Stress: $F_u = 45$ ksi

Reinforcing Outsert:

Ø3.5" OD x 0.18" wall x 42"
High Strength ERW Structural Steel Tubing
per ASTM A513, Type 1, Grade 1010
Min Yield Stress: $F_y = 32$ ksi
Min Ult Tensile Stress: $F_u = 45$ ksi

Outsert Ring:

Ø4.0" OD x 0.25" wall x 0.5"
High Strength Structural Steel Tubing
Min Yield Stress: $F_y = 50$ ksi
Min Ult Tensile Stress: $F_u = 60$ ksi

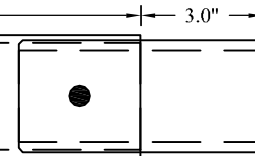
Optional Corrosion Protection:

Hot-dipped Galvanized per ASTM A123-02
Galvanization Thickness
Tube material less than 0.125" thick
Grade 45 (0.0018")
Tube material greater than 0.125" thick
Grade 75 (0.0030")



Ø3.0" OD x 0.188" wall x 36" Structural Tubing
GT Part# FP3TH
(3" Heavy Duty Pier Tube)

Ø3" Heavy Duty Foundation Pier



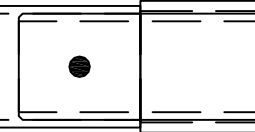
Ø2.625" OD x 0.188" x 6"
GT Part# FP6CH
(3" HD Tube Coupler)



Ø3.25" OD x 0.25" x 3.125"
GT Part# FP3FCH
(HD Friction Collar)



Ø3.0" OD x 0.188" wall x 36" Structural Tubing
GT Part# FP3SPH
(3" Heavy Duty Starter Tube)



Ø3.5" OD x 0.188" wall x 42" Structural Tubing
GT Part# FP3TRO
(42" Outsert Tube - to be used with Heavy Duty Bracket FP3BAH series)

Pier Tube - Starter Tube - Outsert



Coupler Friction Collar

Pier Tube:
FP3TH
Ø3.0" OD x 0.188" wall x 36"
High Strength ERW Structural Steel Tubing
per ASTM A500, Grade 1010
Min Yield Stress: $F_y = 46$ ksi
Min Ult Tensile Stress: $F_u = 50$ ksi

Tube Coupler:
FP6CH
Ø2.625" OD x 0.188" wall x 6"
High Strength DOM Structural Steel Tubing
per ASTM A513, Type 5 Grade 1026
Min Yield Stress: $F_y = 65$ ksi
Min Ult Tensile Stress: $F_u = 75$ ksi

Friction Collar:
FP3FCH
Ø3.25" OD x 0.25" wall x 3.125"
High Strength ERW Structural Steel Tubing
per ASTM A513, Type 1, Grade 1010
Min Yield Stress: $F_y = 32$ ksi
Min Ult Tensile Stress: $F_u = 45$ ksi

Weld:
ER70 per AWS D1.1-2010
Min Ult Tensile Stress: $F_u = 70$ ksi

Reinforcing Ousert:
FP3TRO
Ø3.5" OD x 0.188" wall x 42"
High Strength ERW Structural Steel Tubing
per ASTM A513, Type 1, Grade 1010
Min Yield Stress: $F_y = 32$ ksi
Min Ult Tensile Stress: $F_u = 45$ ksi

Outsert Ring:
Ø4.0" OD x 0.25" wall x 0.5"
High Strength Structural Steel Tubing
Min Yield Stress: $F_y = 50$ ksi
Min Ult Tensile Stress: $F_u = 60$ ksi

Optional Corrosion Protection:
Hot-dipped Galvanized per ASTM A123-02
Galvanization Thickness
Tube material less than 0.125" thick
Grade 45 (0.0018")
Tube material greater than 0.125" thick
Grade 75 (0.0030")